

INSTALLATION INSTRUCTIONS

UNI-COLOUR SHOWER / WALL MIXER

IMPORTANT INFORMATION

- Connections brazed onto the mixer may cause excessive heat and permanent damage and should not be done
- All pipework must be flushed thoroughly before installation as any foreign material, such as sand or dirt, may block the flow regulating device and reduce the flow of water
- Inlet pressure for hot and cold water should be equal
- Inlet pressure range: 150-1500kPa
- **Regulation: 500kPa is the maximum operating pressure allowed at any outlet within a building (Ref. AS/NZS3500.1-2003, clause 3.3.4)**
- Maximum hot water temperature: 80°C

INSTALLATION INSTRUCTIONS

STEP 1. INSTALL MIXER BODY

Fit Mixer Body onto suitable mounting plate or noggin in the wall:

- Ensure Mixer Body is level and square to wall, so Trim Kit will sit correctly in finished position
- Secure Mixer Body to mounting with 4 x screws using the 4 x holes in base plate, as shown in Fig. 2
- When facing the front of the mixer ensure the connections are as follows:
 - ▶ **Cold** Water Inlet connection on right
 - ▶ **Hot** Water Inlet connection on left
 - ▶ **Mixed** Water Outlet connection facing upwards
- LEAVE PROTECTIVE PLASTIC SLEEVE (10) OVER MIXER BODY CARTRIDGE (8) DURING WATER-PROOFING/SHEETING/TILING. ONLY TO BE REMOVED WHEN INSTALLING TRIM KIT (STEP 2)

STEP 2. INSTALL TRIM KIT

After water-proofing/sheeting/tiling is complete, install Trim Kit onto Mixer Body:

- Remove protective plastic sleeve (10)
- Gently slide Cartridge Cover (7) onto Mixer Body Cartridge (8)
- Screw Dome Nut (6) onto Threaded Nut (9)
- Slide Cover Plate (5) over the Cartridge Cover (7), push until the Cover Plate sits flush with wall (as shown in Fig. 2)
- Fit Handle:
 - ▶ **Lever Handle:** Push Lever Handle (1) into position on Mixer Body Cartridge (8), ensuring it is fully pushed on then tighten Lever Handle (1) into position with Grub Screw (2) using Allen Key (4) provided, lastly fit Grub Screw Cap (3) into position
 - ▶ **Pin Lever Handle:** Remove Pin Lever (11) by unscrewing anti-clockwise, push Handle (12) into position on Mixer Body Cartridge (8), ensuring it is fully pushed on, then screw Grub Screw (13) into Handle (12) using Allen Key (14) then rescrew Pin Lever on clockwise (no Grub Screw Cap required)

STEP 3. TEST MIXER

Test mixer in compliance with AS/NZS3500.1-2003 to ensure it is leak-free and is providing correct water flow and temperature at outlet.

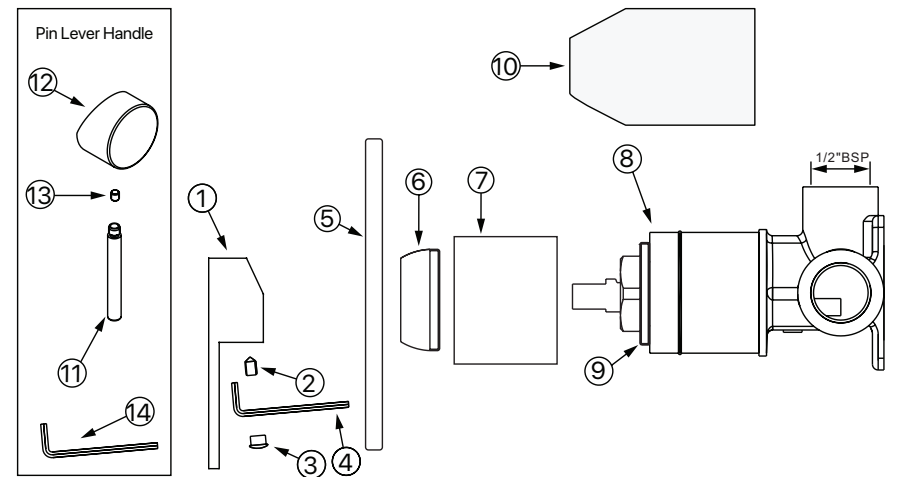


Fig. 1 - Exploded View

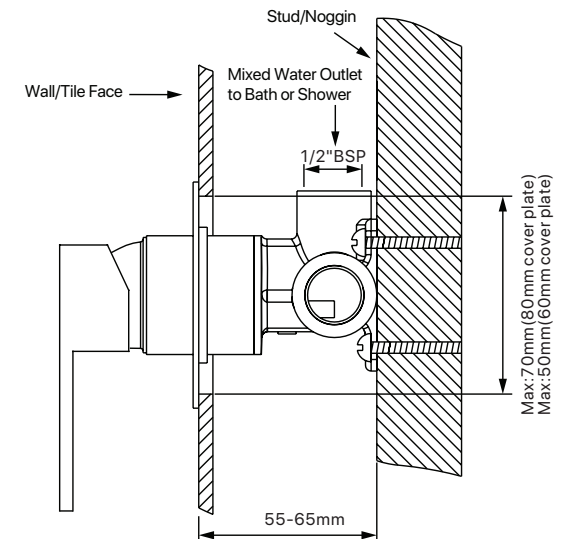


Fig. 2 - Installed Mixer